

**1 TYPES**

- Type **M**: With hollow for grip
- Type **L**: With L-Handle
- Type **T**: With T-Handle



Pin  
Titanium



Balls  
Ceramic



Handle (type L / T)  
Polyamide based (PA) technopolymer, black  
Temperature resistant up to 80 °C



Compression spring  
Corrosion-resistant alloy 2.4610  
Temperature resistant up to 400 °C

**FEATURES AND APPLICATIONS**

Ball lock pins GN 113.30 are used for quick fixing, connecting and locking of various parts and workpieces. A typical application are locating pins which have often to be removed and installed again.

By pressing the spring loaded push button, both balls are unlocked and by releasing it, the balls are locked again.

Due to the selected material, ball lock pins GN 113.30 are suitable for use in highly corrosive environments. The titanium material also results in a 40% weight reduction compared to a similar part of steel or stainless steel.

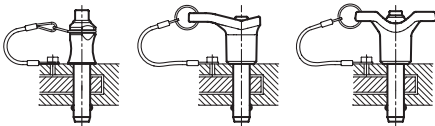
The titanium version is used in lightweight construction, maritime applications and in chemical production.

**ACCESSORY**

Stainless Steel Retaining Cable GN 111.8

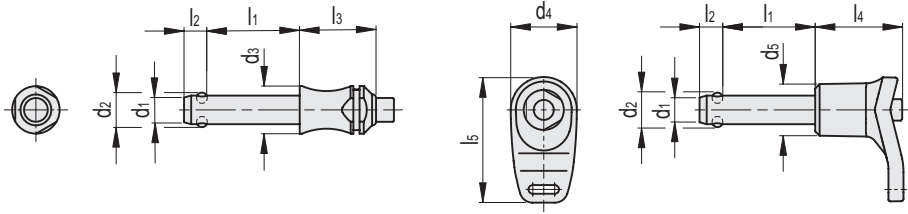
**ON REQUEST**

With round knob

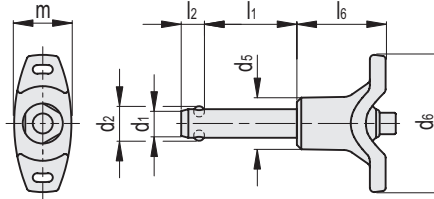
**Application examples**

GN 113.30-M

GN 113.30-L



GN 113.30-T



Conversion Table		1 mm = 0.039 inch	
d1		l1	
mm	inch	mm	inch
6	0.23	10	0.39
8	0.31	20	0.78
10	0.39	30	1.17
		40	1.56
		50	1.95
		60	2.34

METRIC

GN 113.30-M

Code	Description	d1 -0.04 -0.08	d2	d3	l1 +0.6	l2 ±1	l3 +0.2	Mounting hole H11	Double sided shearing force [kN]#	⚖
GN.78132	GN 113.30-6-10-M	6	7	10	10	7	22	6	23	7
GN.78135	GN 113.30-6-20-M	6	7	10	20	7	22	6	23	8
GN.78138	GN 113.30-6-30-M	6	7	10	30	7	22	6	23	9
GN.78141	GN 113.30-6-40-M	6	7	10	40	7	22	6	23	10
GN.78144	GN 113.30-6-50-M	6	7	10	50	7	22	6	23	11
GN.78152	GN 113.30-8-20-M	8	9.5	14	20	8.2	27	8	43	18
GN.78155	GN 113.30-8-30-M	8	9.5	14	30	8.2	27	8	43	21
GN.78158	GN 113.30-8-40-M	8	9.5	14	40	8.2	27	8	43	23
GN.78161	GN 113.30-8-50-M	8	9.5	14	50	8.2	27	8	43	25
GN.78172	GN 113.30-10-20-M	10	12	14	20	9.6	27	10	69	41
GN.78175	GN 113.30-10-30-M	10	12	14	30	9.6	27	10	69	44
GN.78178	GN 113.30-10-40-M	10	12	14	40	9.6	27	10	69	47
GN.78181	GN 113.30-10-50-M	10	12	14	50	9.6	27	10	69	49
GN.78184	GN 113.30-10-60-M	10	12	14	60	9.6	27	10	69	51

GN 113.30-L

Code	Description	d1 -0.04 -0.08	d2	d4	d5	l1 +0.6	l2 ±1	l4	l5	Mounting hole H11	Double sided shearing force [kN]#	⚖
GN.78131	GN 113.30-6-10-L	6	7	17.5	13.5	10	7	26.5	33	6	23	37
GN.78134	GN 113.30-6-20-L	6	7	17.5	13.5	20	7	26.5	33	6	23	38
GN.78137	GN 113.30-6-30-L	6	7	17.5	13.5	30	7	26.5	33	6	23	39
GN.78140	GN 113.30-6-40-L	6	7	17.5	13.5	40	7	26.5	33	6	23	40
GN.78143	GN 113.30-6-50-L	6	7	17.5	13.5	50	7	26.5	33	6	23	41
GN.78151	GN 113.30-8-20-L	8	9.5	23	18	20	8.2	34	43.5	8	43	25
GN.78154	GN 113.30-8-30-L	8	9.5	23	18	30	8.2	34	43.5	8	43	28
GN.78157	GN 113.30-8-40-L	8	9.5	23	18	40	8.2	34	43.5	8	43	30
GN.78160	GN 113.30-8-50-L	8	9.5	23	18	50	8.2	34	43.5	8	43	32
GN.78171	GN 113.30-10-20-L	10	12	23	18	20	9.6	34	43.5	10	69	41
GN.78174	GN 113.30-10-30-L	10	12	23	18	30	9.6	34	43.5	10	69	44
GN.78177	GN 113.30-10-40-L	10	12	23	18	40	9.6	34	43.5	10	69	47
GN.78180	GN 113.30-10-50-L	10	12	23	18	50	9.6	34	43.5	10	69	49
GN.78183	GN 113.30-10-60-L	10	12	23	18	60	9.6	34	43.5	10	69	51

GN 113.30-T

Code	Description	d1 -0.04 -0.08	d2	d5	d6	l1 +0.6	l2 ±1	l6	m	Mounting hole H11	Double sided shearing force [kN]#	⚖
GN.78133	GN 113.30-6-10-T	6	7	13.5	40	10	7	25	15.5	6	23	10
GN.78136	GN 113.30-6-20-T	6	7	13.5	40	20	7	25	15.5	6	23	11
GN.78139	GN 113.30-6-30-T	6	7	13.5	40	30	7	25	15.5	6	23	12
GN.78142	GN 113.30-6-40-T	6	7	13.5	40	40	7	25	15.5	6	23	13
GN.78145	GN 113.30-6-50-T	6	7	13.5	40	50	7	25	15.5	6	23	14
GN.78153	GN 113.30-8-20-T	8	9.5	18	48	20	8.2	31	20.5	8	43	24
GN.78156	GN 113.30-8-30-T	8	9.5	18	48	30	8.2	31	20.5	8	43	27
GN.78159	GN 113.30-8-40-T	8	9.5	18	48	40	8.2	31	20.5	8	43	29
GN.78162	GN 113.30-8-50-T	8	9.5	18	48	50	8.2	31	20.5	8	43	31
GN.78173	GN 113.30-10-20-T	10	12	18	48	20	9.6	31	20.5	10	69	41
GN.78176	GN 113.30-10-30-T	10	12	18	48	30	9.6	31	20.5	10	69	44
GN.78179	GN 113.30-10-40-T	10	12	18	48	40	9.6	31	20.5	10	69	47
GN.78182	GN 113.30-10-50-T	10	12	18	48	50	9.6	31	20.5	10	69	49
GN.78185	GN 113.30-10-60-T	10	12	18	48	60	9.6	31	20.5	10	69	51

# Breaking strength

